

Comparison of Particle Swarm Optimization and Genetic Algorithm to Optimal Control of Proton Exchange Membrane Fuel Cell

¹A. Rezazadeh,
²M. Sedighzadeh,
³A. Askarzadeh,



Abstract—Since the operation of a Proton Exchange Membrane Fuel Cell (PEMFC) is extremely nonlinear process as well as its parameters change when it is operating, a designer can't easily to control it; accordingly conventional controllers can not satisfy the control objectives as well as the intelligent controllers. Thus, in this paper an intelligent controller is proposed for fuel cell stack control system based on Particle Swarm Optimization (PSO). In order to analyze the efficiency of this method, the results are compared with other intelligent controller based on Genetic Algorithm (GA). The simulation results demonstrate the high-performance capability of both proposed controllers in terms of accuracy and convergence speed.

I. INTRODUCTION

Due to the pollution resulted from using of fossil fuels and increasing demand for energy, the renewable energy resources have been mostly regarded in recent years. In past decades fuel cells with many reasons such as excellent reliability, high efficiency and their low emissions to the environment have been considered by researchers [1]. Among of various kinds of fuel cells, most attention has been attracted toward Proton exchange membrane fuel cell (PEMFC) due to many advantages such as low operating temperature, high power density, low noise, light weight and so on.

Fuel cell is a new device for generating electrical power that directly converts hydrogen and oxygen chemical energy to electrical energy during a chemical reaction. PEMFC is a multi-input and multi- output system with nonlinear relations between its inputs and outputs which some of its parameters change during of time, so the controlling of PEMFC is very hard job and the Conventional controllers can't satisfactory control it.

In recent years many controllers have been proposed in literature to control of PEMFC and some of them have given satisfactory results. The authors in [2] have developed an adaptive control using neural networks and approximate models, which achieved a good performance of the controller.

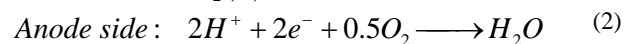
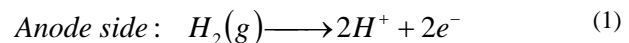
Particle swarm optimization (PSO) and Genetic algorithm (GA) as two powerful techniques are widely used in optimization problems. In [3] a PSO-based parameter identification technique of PEMFC model has been proposed

in terms of voltage-current characteristics. In [4] a stand alone power supply system has been optimized to deliver the maximum power output at the load's operating voltage by Genetic Algorithm. In this paper the objective is to propose a new control strategy using the intelligent methods of Particle Swarm Optimization and Genetic Algorithm to control of PEMFC voltage. At first the common model of PEMFC is introduced and the control of the system is done based on this model. Since the output voltage of fuel cell is affected by hydrogen and oxygen partial pressures, by precise regulation of these gases the output voltage can be retained constant when the current changes.

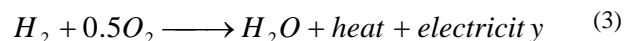
This paper is arranged as follows. In section II, existing dynamic model of PEMFC is presented. PSO and GA algorithms are briefly introduced in section III. Section IV indicates the topology of proposed controllers. Simulation results are stated in section V and finally the conclusion is situated in section VI.

II. PEMFC MODELING

PEMFC is an electrochemical device that can produce electricity as long as the hydrogen and oxygen gases are supplied to it. The chemical reactions that occur at the PEMFC sides are as following.



Then, the full reaction occurring in fuel cell is



Several analytical and experimental models to indicate the PEMFC internal behaviour have been introduced in literature. Based on developed model in [1] the electrical equivalent circuit for a single fuel cell can be shown by Fig. 1.

¹A. Rezazadeh is with Shahid Beheshti University (SBU), Iran. He can be reached at a_rezazade@sbu.ac.ir

²M. Sedighzadeh is with Shahid Beheshti University (SBU) and Imam Khomeini International University (IKIU), Iran. He can be reached at m_sedighi@sbu.ac.ir.

³A. Askarzadeh is with Shahid Beheshti University (SBU), Iran. He can be reached at askarzadeh_a@yahoo.com.

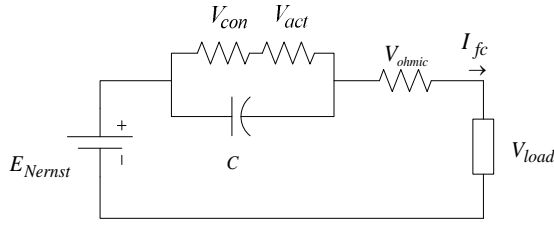


Fig. 1. Electrical equivalent circuit of single fuel cell

Using the equivalent circuit the cell voltage can be represented by:

$$V_{fc} = E_{Nernst} - V_{act} - V_{ohmic} - V_{con} \quad (4)$$

In the equation above, E_{nernst} is the PEMFC open circuit voltage and indicates the reversible voltage. V_{act} is activation voltage drop, including anode and cathode. V_{ohmic} is ohmic voltage drop that results from the resistance to the electrons transfer through the collecting plates and carbon electrodes, and the resistance to the protons transfer through the solid membrane and V_{con} represents the voltage drop which is caused due to the reduction in concentration of the reactant gases. The mentioned voltages can be calculated by following expressions.

$$E_{Nernst} = 1.229 - (T - 298.15)(0.85 \times 10^{-3}) + 4.31 \times 10^{-5} T \left[\ln(p_{H_2}) + \frac{1}{2} \ln(p_{O_2}) \right] \quad (5)$$

Where T is the cell operation temperature (in K), P_{O_2} and P_{H_2} are the partial pressures of oxygen and hydrogen (in atm).

$$V_{act} = -[\zeta_1 + \zeta_2 T + \zeta_3 T \cdot \ln(c_{O_2}) + \zeta_4 T \cdot \ln(I_{fc})] \quad (6)$$

Where I_{fc} is the fuel cell operating current (in A), the ζ_i are parametric coefficients for each cell and C_{O_2} is the consideration of oxygen in the catalytic interface of the cathode (in mol/cm³).

$$V_{ohmic} = I_{fc} (R_m + R_c) \quad (7)$$

Where R_c shows the resistance to the transfer of protons through the membrane usually considered constant and R_m represents the equivalent resistance of the membrane which is calculated by:

$$R_m = \frac{\rho_m \cdot l}{A} \quad (8)$$

Where ρ_m is the specific resistivity for the membrane for the electron flow (in $\Omega \cdot \text{cm}$), A is the cell active area (in cm²) and l is the thickness of membrane (in cm).

$$V_{con} = -b \cdot \ln \left(1 - \frac{J}{J_{max}} \right) \quad (9)$$

Where b is a constant value in volt which depends on the cell operation state and J is the current density of the cell in (in A/cm²).

As the equivalent circuit indicates, the PEMFC has also a dynamic behaviour. This dynamic behaviour is caused due to one phenomenon known as “charge double layer”. There is a charge accumulation on the surfaces of two materials when are differently charged and are in contact. The charge layer on the interface electrode/electrolyte acts as storage of electrical charges and behaves as an electrical capacitor. Therefore, it can be considered as a first order delay that exists in activation and concentration voltage drops. The time constant, associated with this delay can be calculated by:

$$\tau = C \cdot R_a \quad (10)$$

The parameter of C is the system equivalent capacitor (in F) which is about some few Farads. The equivalent resistance R_a is determined from the cell output current and of the calculated activation and concentration voltages.

$$\tau = C \cdot R_a = C \cdot \left(\frac{V_{act} + V_{con}}{I_{fc}} \right) \quad (11)$$

In broad terms, the capacitive effect ensures the good dynamic performance of the cell, since the voltage moves smoothly to a new value in response to a change in the load current.

In the wide range to use in large demands, several fuel cells must be connected in series, forming a stack, which overall voltage is the summation of voltage of fuel cells.

III. PARTICLE SWARM OPTIMIZATION AND GENETIC ALGORITHM

A. PSO

Particle Swarm Optimization is an optimization method based on population which was proposed by Kennedy and Eberhart in 1995 [5]. This algorithm is inspired by social search for food by birds and fishes. In PSO, each particle is a representative of a solution for the problem and moves in the search space with a velocity according to its own previous best solution and its group's previous best solution. Some of interesting characteristics of PSO are its simplicity of application and its high speed as compared to other evolutionary optimization methods.

In the PSO particles move in the search space as long as the stopping criterion is reached.

$$v_i(t+1) = wv_i(t) + c_1 \text{rand}_1(p_i(t) - x_i(t)) + c_2 \text{rand}_2(g(t) - x_i(t)) \quad (12)$$

$$x_i(t+1) = x_i(t) + v_i(t+1) \quad (13)$$

Where $v_i(t+1)$ is the updated speed vector of the i^{th} particle,

$c1, c2, w$ are the weighting factors, $x_i(t+1)$ is the updated position of the i^{th} particle, $rand_1, rand_2$ are random coefficients, $p_i(t)$ is the best position of the i^{th} particle, and $g(t)$ is the best global position of particles.

B. GA

Genetic Algorithm is a search method that can be used to solve optimization problems. GA technique is based on natural biological evolution [6] and works by generating a large set of possible solutions to a given problem. GA has been discussed in many literatures. Therefore in here, we avoid from more details.

IV. PROPOSED CONTROL DESIGN

In this paper the aim is to propose a control strategy based on Particle Swarm Optimization to control the PEMFC voltage. Since the output voltage of fuel cell is affected by hydrogen and oxygen partial pressures, with precise regulation of these gases, the output voltage can be retained constant when the current changes.

Since the output voltage of cell changes when the current changes, proposed controller finds the optimal hydrogen and oxygen partial pressures that minimize the objective function and applies to system. The objective function is defined by deviation actual output voltage from desired voltage.

$$Objective\ Function = |V_{ref} - V_s| \tag{14}$$

Where V_{ref} is the reference voltage and V_s is the output voltage of the PEMFC stack.

In this paper finding optimal pressures in each time is calculated by using Particle Swarm Optimization and Genetic Algorithm and then they are applied to the system.

Since the stoichiometric consumption rate for the two gases is constant, the oxygen partial pressure is considered in this controller half of the hydrogen partial pressure. Therefore in the control system, only one controller has been adopted in conjunction with two independent gains, one for hydrogen line actuator and the other for the oxygen line actuator [7]. Schematic of the control system is shown in Fig.2.

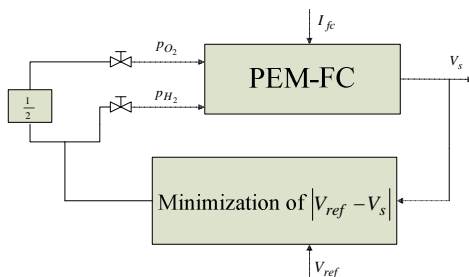


Fig. 2. Schematic of proposed controller for PEMFC

V. SIMULATION RESULTS

PEMFC and its controller are simulated in Matlab environment. PEMFC parameters are given in Table I. The control goal is to adjust the stack voltage at 22 (in Volt).

TABLE I: PEMFC PARAMETERS

Parameter	Value
n	32
T	333 K
A	64 cm ²
l	178 μm
P_{H_2}	1-3 atm
P_{O_2}	1-3 atm
b	0.016 V
R_c	0.0003 Ω
C	3 F
ξ_1	-0.948
ξ_2	0.00286
ξ_3	7.6e-5
ξ_4	-1.93e-4
ψ	23
J_{max}	469 mA/cm ²
J_n	3 mA/cm ²
I_{max}	30 A

Fig. 3 shows the variation of load current. The output voltage of stack with the PSO controller is indicated in Fig. 4 and calculated optimal hydrogen and oxygen partial pressures for the system are indicated in Fig. 5.

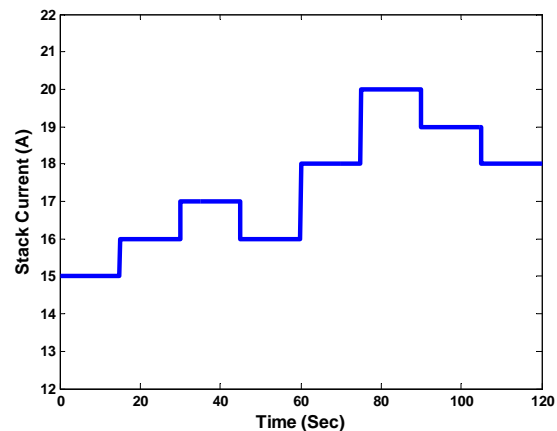


Fig. 3. Variation of the applied load current to the PEMFC system

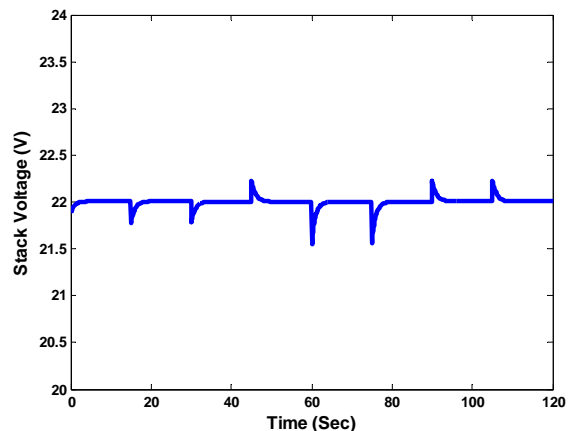


Fig. 4. Stack voltage with the PSO controller which is fixed at 22 Volt

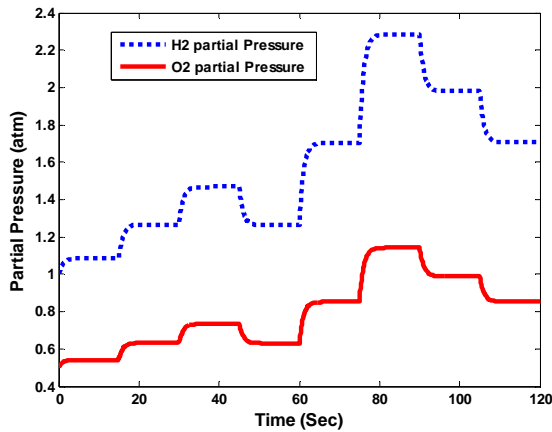


Fig. 5. Calculated optimal partial pressures by the PSO controller

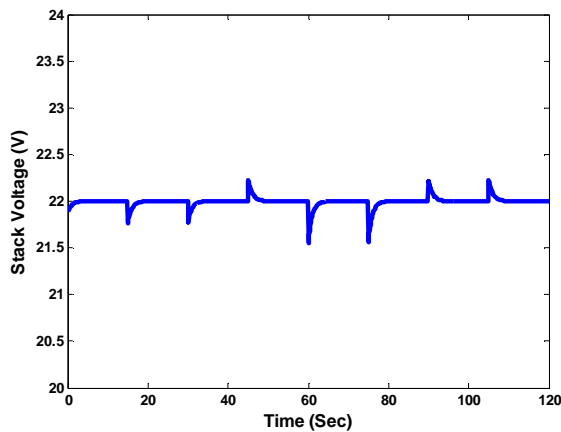


Fig. 6. Stack voltage with the GA controller which is fixed at 22 Volt

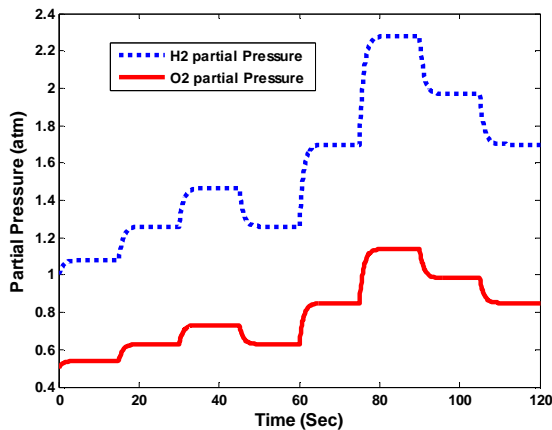


Fig. 7. Calculated optimal partial pressures by the GA controller

The output voltage of stack with the GA controller is indicated in Fig. 6 and calculated optimal hydrogen and oxygen partial pressures are shown in Fig. 7.

The simulation results show the desired performance of controllers. Both controllers have approximately the same precision to regulate the stack voltage at 22 (in volt) but PSO controller in terms of the lasted time for finding the optimal

partial pressures acts better than GA controller. Moreover, the calculated partial pressures are same.

VI. CONCLUSION

In this paper a new controller based on Particle Swarm Optimization is developed to control the voltage of PEMFC stack by acting on partial pressures. In order to analyze the efficiency of the controller, the results are compared with other intelligent controller based on Genetic Algorithm. Design and simulation is performed and the obtained results show the efficiency of both controllers.

VII. REFERENCES

- [1] J. M. Correa, F. A. Farret, L. N. Canha, M. G. Simoes, "An electrochemical-based fuel cell model suitable for electrical engineering automation approach," *IEEE Trans. Ind, Electron*, vol. 51, pp. 1103-1112, 2004.
- [2] K. S. Narendra, S. Mukhopadhyay, "Adaptive control using neural networks and approximate models," *IEEE Trans, neural networks*, vol. 8, pp. 1103-1112, 1997.
- [3] M. Ye, X. Wang, Y. Xu, "Parameter identification for proton exchange membrane fuel cell model using particle swarm optimization," *international journal of hydrogen energy*, vol. 34, pp. 981-989, 2009.
- [4] I. Mohamed, N. Jenkins, "Proton exchange membrane (PEM) fuel cell configuration using genetic algorithms," *Journal of power source*, vol. 131, pp. 142-146, 2004.
- [5] R. C. Eberhart, J. Kennedy, "Anew optimizer using particle swarm theory," *IEEE, Service center*, pp. 39-43, 1995.
- [6] D. Lawrence, *Handbook of Genetic Algorithm*, Van Nostrand Reinhold, 1991.
- [7] M. Cirrincione, M. Pucci, G. Cirrincione, M.G. Simoes, "A neural non-linear predictive control for PEM-FC," *J. Electrical system*, vol. 1-2, pp. 1-18, 2005.

VIII. BIBLIOGRAPHIES



A. Rezazade was born in Tehran, Iran in 1969. He received his B.Sc and M.Sc. degrees and Ph.D. from Tehran University in 1991, 1993, and 2000, respectively, all in electrical engineering. He has two years of research in Electrical Machines and Drives laboratory of Wuppertal University, Germany, with the DAAD scholarship during his Ph.D. and Since 2000 he was the head of CNC EDM Wirecut machine research and manufacturing center in Pishraneh company. His research interests include application of computer controlled AC motors and EDM CNC machines and computer controlled switching power supplies. Dr. Rezazade currently is an assistant professor in the Power Engineering Faculty of Shahid Beheshti University. His research interests are Power system control and modeling, Industrial Control and Drives.



M. Sedighzadeh received the B.S. degree in Electrical Engineering from the Shahid Chamran University of Ahvaz, Iran and M.S. and Ph.D. degrees in Electrical Engineering from the Iran University of Science and Technology, Tehran, Iran, in 1996, 1998 and 2004, respectively. From 2000 to 2007 he was with power system studies group of Moshanir Company, Tehran, Iran. Currently, he is with Faculty of Electrical and Computer Engineering, Shahid Beheshti University, Tehran, Iran and an Assistant Professor in the Faculty of Engineering and Technology, Imam Khomeini International University. His research interests are Power system control and modeling, FACTS devices and Distributed Generation.



Alireza Askarzadeh was born in Zarand, Iran in 1984. He received his B.Sc. and M.Sc. degrees from the Shahid Bahonar University of Kerman and Shahid Beheshti University of Tehran in 2007 and 2009, respectively, all in electrical engineering. His research interests are in the areas of fuel cell (FC), artificial neural networks, optimization, and control. He is currently working towards his PhD degree at Shahid Beheshti University of Tehran (SBU), Iran.